



316/20 Chisholm Street Wolli Creek NSW

2 1 1

Stylish two-bedroom apartment combining modern luxury with everyday convenience. Positioned in the heart of Wolli Creek, this beautifully appointed residence offers a seamless lifestyle opportunity with quality finishes throughout. Enjoy laminated timber flooring, air-conditioning, and floor-to-ceiling windows fitted with shutters, creating a light-filled and inviting space you'll love coming home to.

Ideally located just moments from Wolli Creek station, local shops, vibrant cafes, and popular restaurants.

Key Features:

- Two generously sized bedrooms, both with built-in wardrobes.
- Sleek modern kitchen featuring SMEG appliances and gas cooktop.
- Spacious open plan living and dining area.
- Enclosed winter garden, perfect as a year-round retreat.
- Internal laundry with dryer.

[For full version visit the website](https://www.rwproperty.com.au/lease/nsw/st-george/wolli-creek/residential/apartment/8691610)

Type : Apartment

Price : \$930 per week

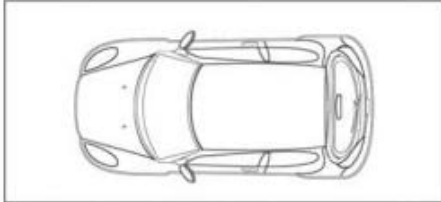
View : <https://www.rwproperty.com.au/lease/nsw/st-george/wolli-creek/residential/apartment/8691610>



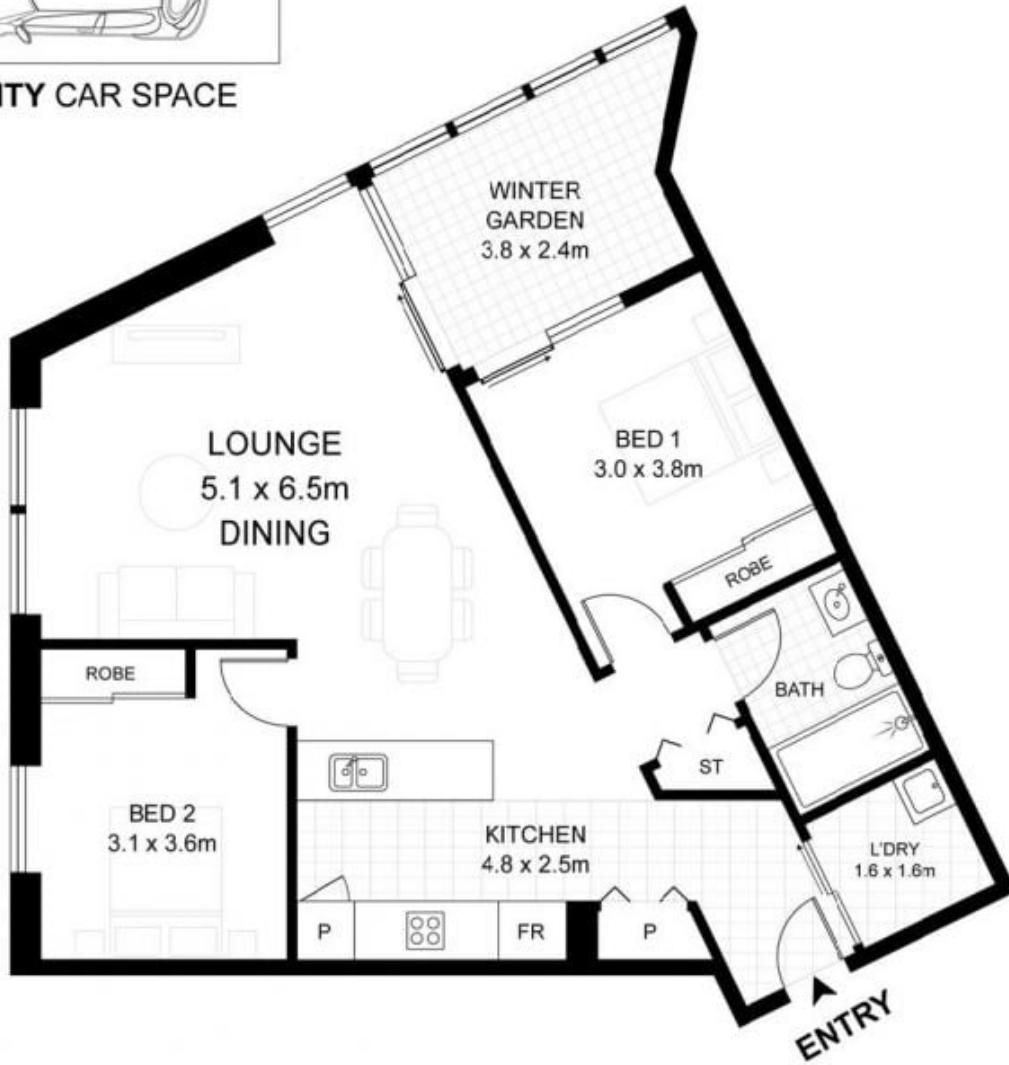
Ricky May
02 9599 9985



Victoria Paneras
02 9599 9985



SECURITY CAR SPACE



316/20 Chisholm Street Wollri Creek NSW 2205

WARNING: DISCLAIMER This information is not to be relied upon. It is strictly used for marketing and illustration purposes only. All measurements are approximate. Not to scale. No liability accepted. You must rely on your own inquiries and seek advice from your solicitor.

