



1101/7 Magdalene Terrace Wollri Creek NSW

1 🏠 1 🚗

Set within the highly regarded 'Vivid' building in Discovery Point, this elevated apartment delivers a seamless blend of light, space and everyday convenience. Positioned on level 11, the home is bathed in natural sunlight and presents in immaculate condition throughout, offering a ready to move in opportunity within Wollri Creek's most established lifestyle communities. Designed for effortless living, it combines a generous open plan layout with quality finishes and access to exceptional resort-style amenities.

- Sun drenched open plan living and dining area with access to enclosed winter garden
- Modern kitchen with large stone benchtop, stainless steel appliances, gas cooktop, dishwasher and ample cupboard space
- Spacious bedroom with built-in wardrobe and access to winter garden
- Contemporary bathroom combined with internal laundry
- Airconditioning throughout
- Secure storage cage
- Immaculately maintained with minimal impact from

[For full version visit the website](#)

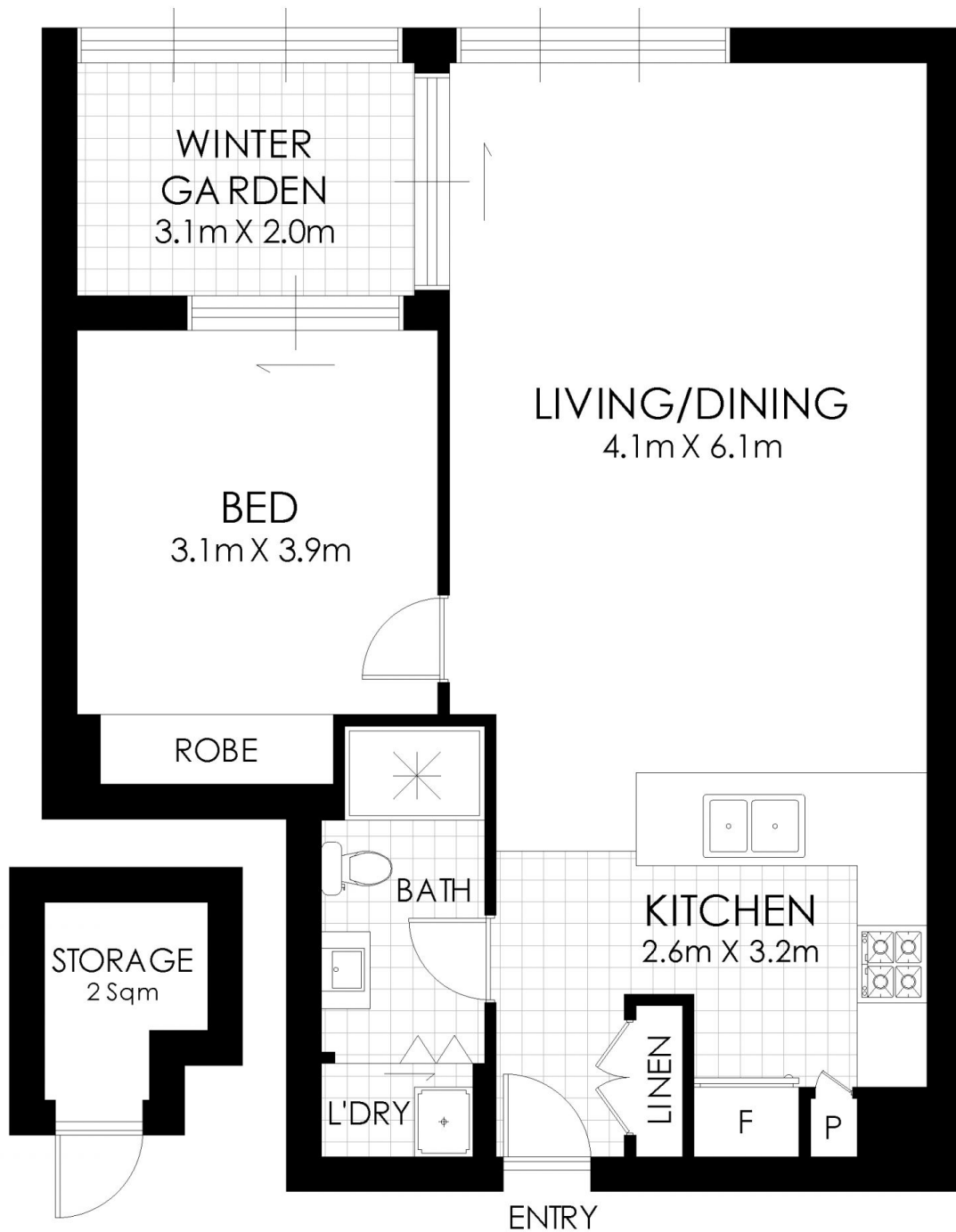
Type : Apartment
Price : For Sale \$649,000
Building Size : 62 sqm
View : <https://www.rwproperty.com.au/sale/nsw/st-george/wollri-creek/residential/apartment/8667393>



Nick Atanasovski
02 9599 9985



Kevin Ou
02 9567 7755



FLOOR PLAN



R&W 1101/7 Magdalene Terrace, Wolli Creek

WARNING: DISCLAIMER This information is not to be relied upon. It is strictly used for marketing and illustration purposes only. All measurements are approximate. Not to scale. No liability accepted. You must rely on your own inquiries and seek advice from your solicitor. Floor plan by cnkplan@cnkplan.com.au / www.cnkplan.com.au