



99/86 Bonar Street Wolli Creek NSW

3 🛏 2 🚿 2 🚗

A rare offering in the tightly held Sorrento complex, this expansive sub-penthouse apartment delivers outstanding space, privacy, and an exceptional indoor-outdoor lifestyle. Designed for those who value room to move without compromising on convenience, this light-filled residence is a standout in today's apartment market.

Set on a level 8 with only two apartments, the thoughtfully designed floorplan separates the living and entertaining zones from the accommodation, while three generous terraces wrap around the apartment, providing multiple outdoor areas to relax, entertain, or simply enjoy the elevated outlook and natural light throughout the day.

- Expansive sub-penthouse apartment with approximately 176 sqm of internal and outdoor living. Total area of approximately 210 sqm including secure parking and storage
- Three exceptionally large bedrooms, all with built-in wardrobes and direct balcony access
- Master bedroom with ensuite and twin wardrobes

[For full version visit the website](https://www.rwproperty.com.au)

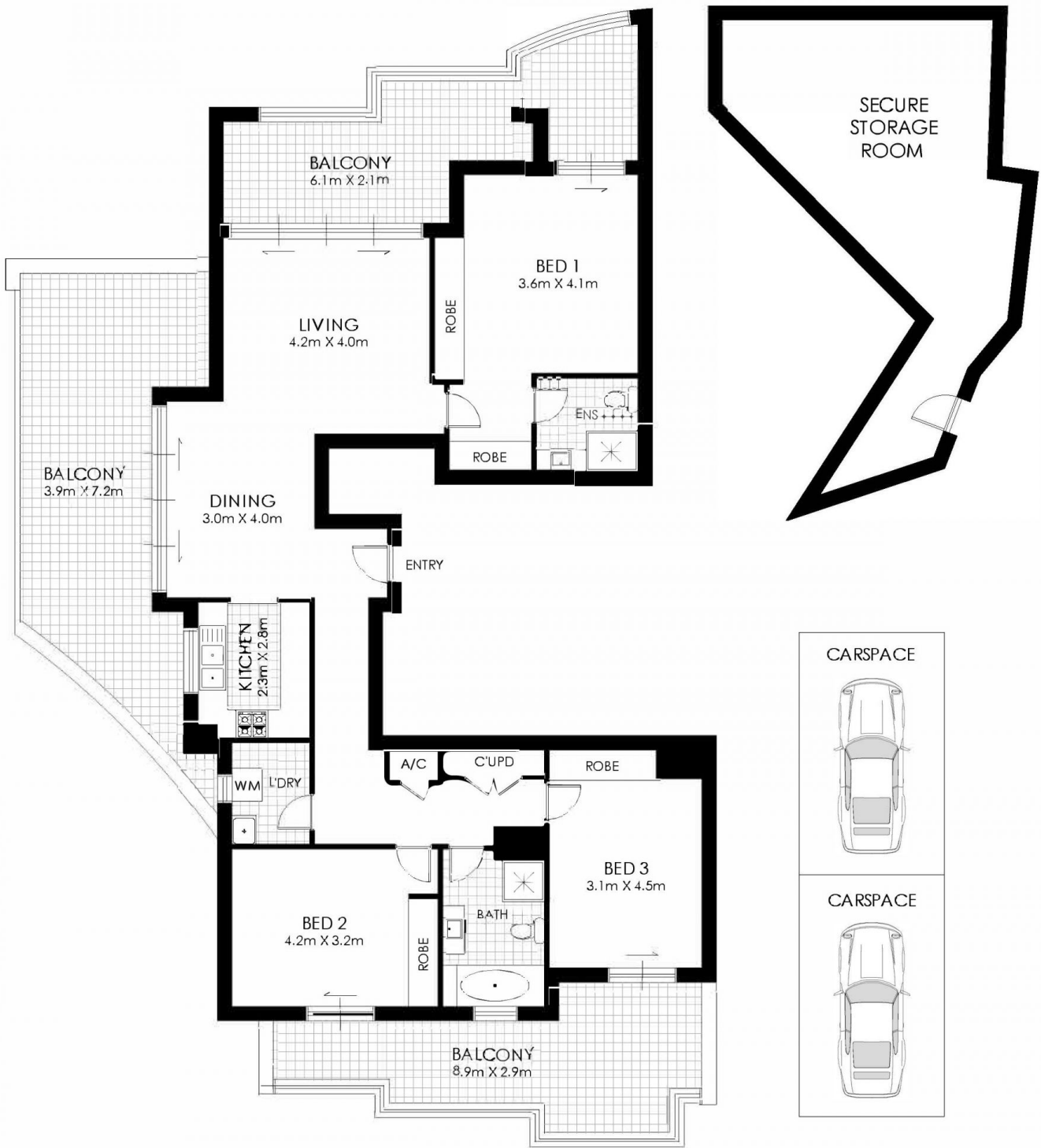
Type : Apartment
Price : For Sale \$1,150,000
Building Size : 210 sqm
View : <https://www.rwproperty.com.au/sale/nsw/st-george/wolli-creek/residential/apartment/8598358>



Nick Atanasovski
02 9599 9985



Kevin Ou
02 9567 7755



LEVEL 8



99/86 Bonar Street, Wollri Creek

WARNING: DISCLAIMER This information is not to be relied upon. It is strictly used for marketing and illustration purposes only. All measurements are approximate. Not to scale. No liability accepted. You must rely on your own inquiries and seek advice from your solicitor.