



128/88 Bonar Street Wolli Creek NSW

2  1  1 

Meticulously maintained and set in the highly sought after 'Sorrento' building, this two bedroom apartment could be the one you have been looking for.

View : <https://www.rwproperty.com.au/lease/nsw/st-george/wolli-creek/residential/apartment/7962156>

The complex features many lifestyle benefits. Enjoy the heated pool, spa, gym, sauna, and undercover bbq area. There is also a dedicated playground for the children. Immerse yourself in the lush surroundings that Wolli Creek offers to residents. Established gardens, walking tracks, cycleways, waterfront parklands and expansive open space. You will never want to leave. The convenient location of this apartment offers an easy level walk to Woolworths and Aldi supermarkets, cafes and an array of dining options. Wolli Creek station provides fast access to both the CBD and the Airport.



Ricky May
02 9599 9985



Victoria Paneras
02 9599 9985

- Two bedrooms, master with built-in robe
- Double glazed windows in the bedrooms for added peace and quiet
- Storage cupboard in second bedroom
- The open plan living and dining area flows out onto a glass fronted balcony. The perfect retreat to relax and unwind

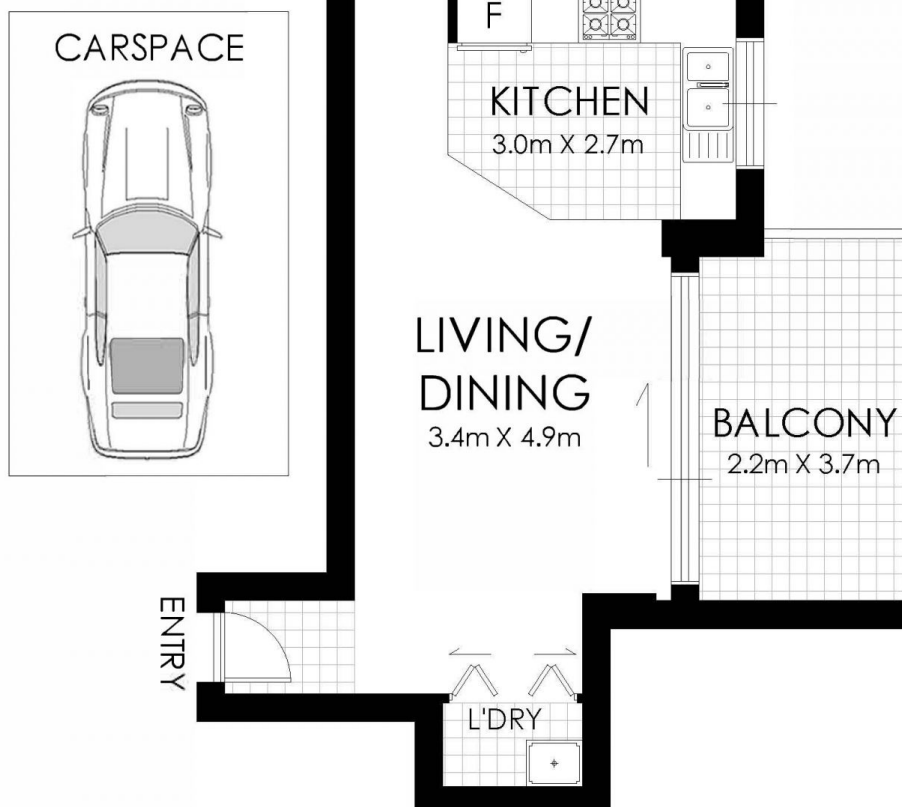
<https://www.rwproperty.com.au>
Wolli Creek Real Estate Agents & Rockdale Real Estate Agents

Internal area 68 sqm and
Total area of 82 sqm approx

Strata levies \$1,699.70 per quarter
Council rates are \$374.00 per quarter
Water rates are \$155.50 per quarter
*Approx.

The estimated rental return for this
property is approximately
\$790.00 per week.

The complex was built by Meriton in 2002
and is pet friendly. The facilities include a
heated pool, gym, BBQ area, children's
playground, manicured gardens, cameras,
on-site building manager and security



FLOOR PLAN

128/88 Bonar Street, Wolli Creek



WARNING: DISCLAIMER This information is not to be relied upon. It is strictly used for marketing and illustration purposes only. All measurements are approximate. Not to scale. No liability accepted. You must rely on your own inquiries and seek advice from your solicitor.