






30A Unwin Street Bexley NSW

5  3  4 

Modern, spacious and homely, this property is sure to please even the most fastidious of individuals. This solid brick home is meticulously presented with an interior design throughout that is elegant with a touch of extravagance that complements its positioning amongst quiet, tranquil grounds.

The property's master bedroom features a walk-in robe and ensuite and the home's 4 other generously sized bedrooms include built-in wardrobes. On top of this, the chef's kitchen with black granite benchtops, gas cooking appliances and double drawer dishwasher highlights the up-to-date nature of the property.

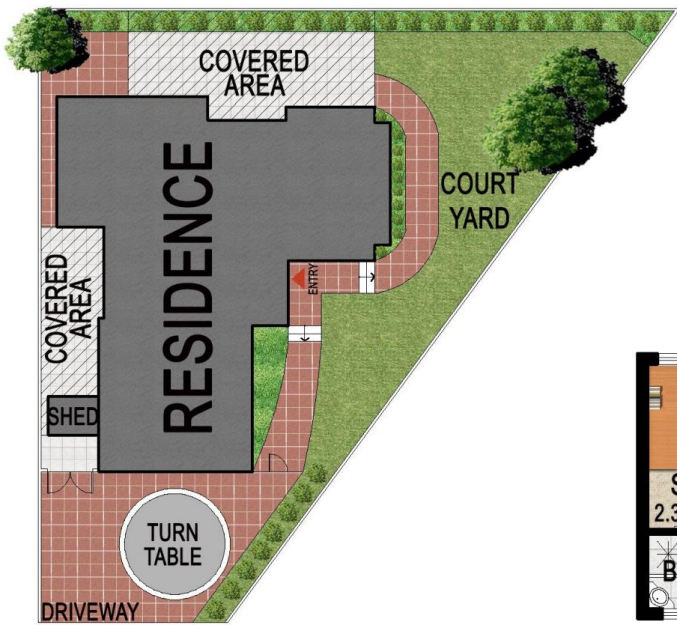
The residence's dress circle address is surrounded by quality homes and is just a short drive to Westfield Hurstville and right next to Bexley Golf Course.

- 5 bedroom home
- Combined butler's pantry with separate food preparation area and sink
- Separately zoned air conditioning
- Secluded covered courtyard

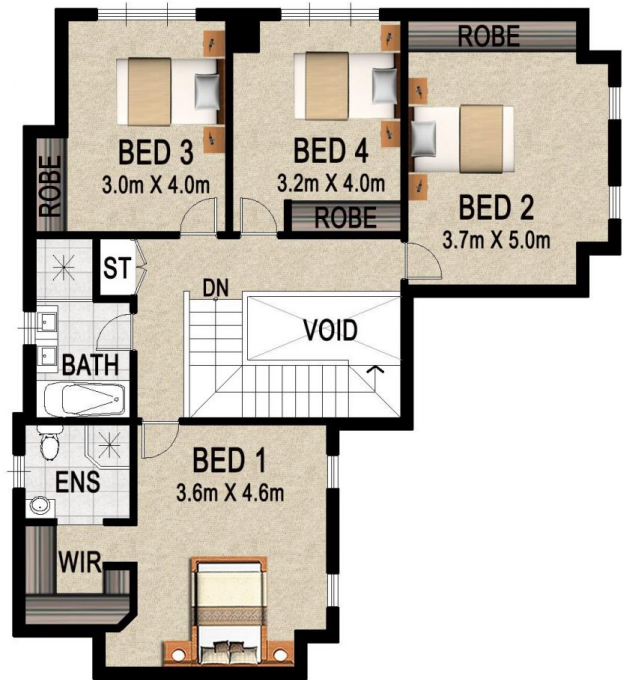
View : <https://www.rwproperty.com.au/lease/nsw/st-george/bexley/residential/house/6998438>



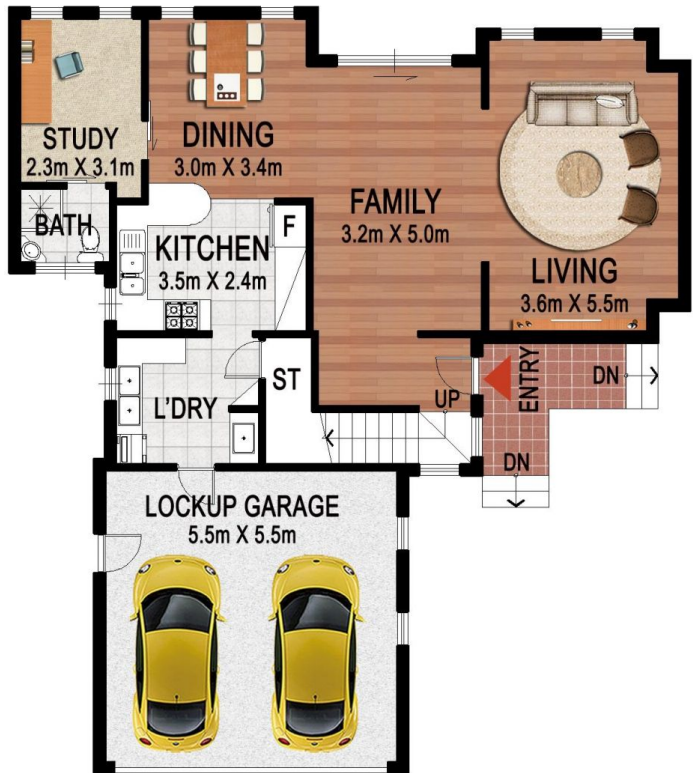
Ricky May
02 9599 9985



SITE PLAN



FIRST FLOOR



GROUND FLOOR



30A Unwin Street, Bexley



The floor plan is shown for view purposes only and is not part of any legal document. All measurements and figures are approximate and not to scale.