



E304/35 Arncliffe Street Wolli Creek NSW

2 2 1

This expansive dual-level apartment could be the one you have been looking for. There is absolutely nothing to spend. The apartment is surrounded by quality developments, parklands, and waterways in one of Sydney's highly sought-after suburbs. Facilities for owners include a heated pool, fully equipped gym, sauna, bbq area, and landscaped gardens. Well positioned 200 meters from the station and Town Centre café and shopping area.

Price : \$ 695,000
Land Size : 121 sqm
View : <https://www.rwproperty.com.au/sale/nsw/st-george/wolli-creek/residential/apartment/6927464>

Entry Level

Downstairs you will find a private retreat comprising a second generous bedroom with a built-in robe. There is also a large second bathroom.

Upstairs

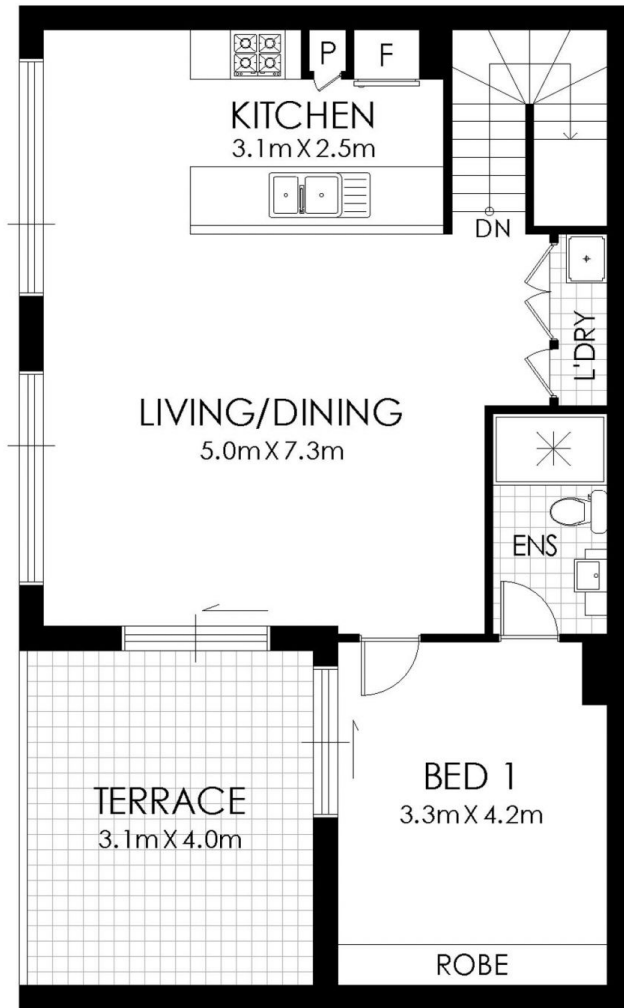
- Master bedroom with ensuite bathroom and built-in robe. This bedroom is airconditioned.
- Spacious air-conditioned open plan living area.
- The extra-large terrace can be accessed via both the living space and the master bedroom. Expansive space to entertain family and friends.
- The modern kitchen features stone benchtops, gas



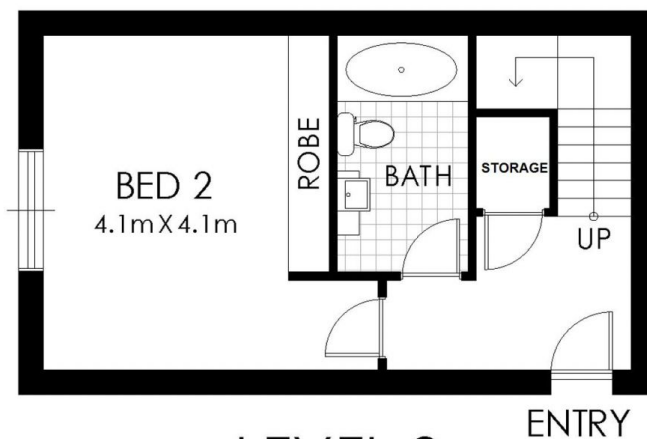
Nick Atanasovski
02 9599 9985



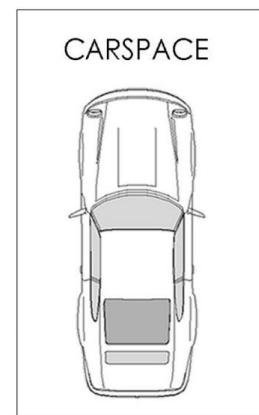
Mark Donnelly
02 9567 7755



LEVEL 4



LEVEL 3



E304/35 Arncliffe Street, Wollie Creek

WARNING: DISCLAIMER This information is not to be relied upon. It is strictly used for marketing and illustration purposes only. All measurements are approximate. Not to scale. No liability accepted. You must rely on your own inquiries and seek advice from your solicitor.