



506 Princes Highway Rockdale NSW

Quality two level commercial building situated in one of the best locations in Rockdale Town Centre. Properties of this calibre rarely become available for lease. Directly opposite train station, bus exchange and minutes to Council carpark.

- Building area 270 sqm approx.
- Mix of retail and office space
- High pedestrian traffic flow with a bus stop at the front door
- Large kitchen with meals area
- Male and Female Amenities
- Rear lane access
- Long term lease available to qualified applicants

Would suit most commercial uses.

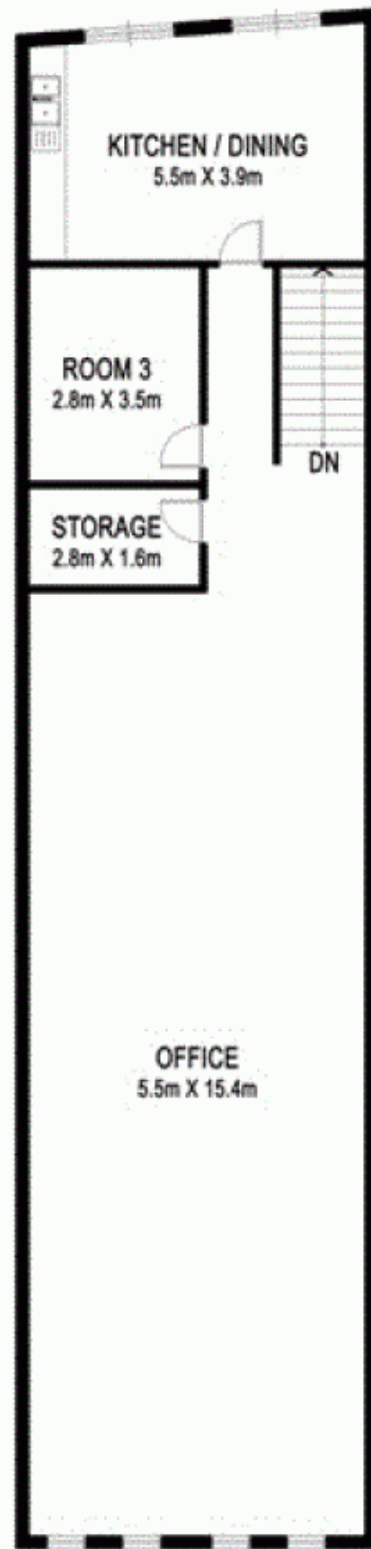
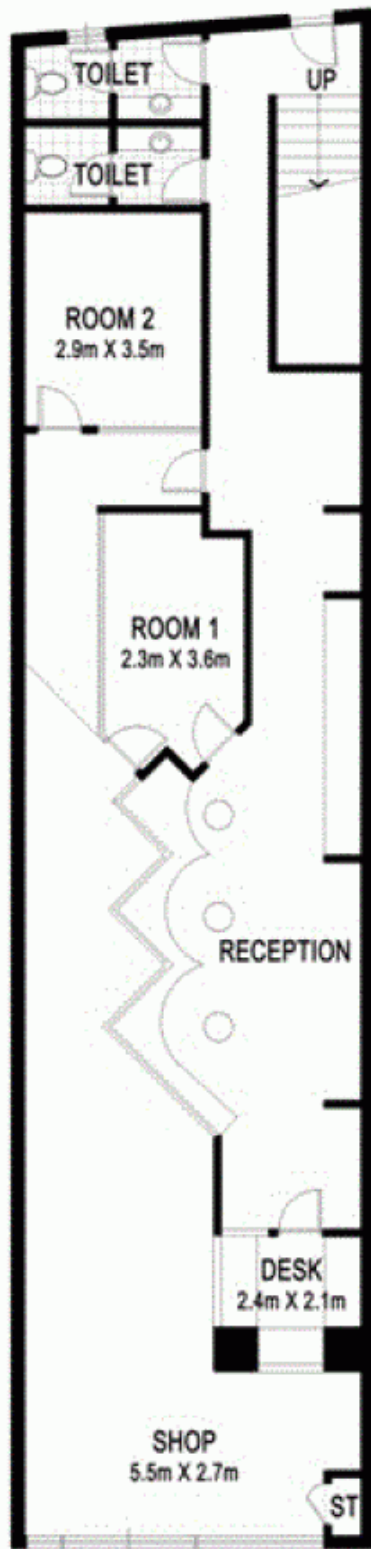
Price : Contact Agent
Building Size : 270 sqm
Land Size : 152 sqm
View : <https://www.rwproperty.com.au/lease/nsw/st-george/rockdale/commercial/retail/6891079>



Mark Donnelly
02 9567 7755



Nick Atanasovski
02 9599 9985



FIRST FLOOR

ENTRY
GROUND FLOOR

APPROX. AREA	
GROUND FLOOR	134.8m ²
FIRST FLOOR	134.8m ²
TOTAL	269.6m ²

506 Princes Highway, Rockdale

The floor plan is shown for view purposes only and is not part of any legal document. All measurements and figures are approximate and not to scale.

