



2/52 Monomeeth Street Bexley NSW

2 1 1

Move in and enjoy. This updated front facing elevated first floor unit could provide the opportunity you have been looking for, offering an entry level price to reside in a premium suburb. The unit is situated in a neat security complex close to Bexley shops, schools, and parks. Within 1.5 kilometers to both Kogarah and Rockdale train stations.

Price : \$ 528,000
Land Size : 75 sqm
View : <https://www.rwproperty.com.au/sale/nsw/st-george/bexley/residential/unit/6836945>

- Two large bedrooms
- Spacious combined lounge and dining space
- Sunny balcony
- Well presented kitchen and bathroom
- Professionally painted throughout
- New carpet
- New LED lighting
- Intercom
- Car space * Pursuant to exclusive use by-law
- 75 sqm internal area approx.

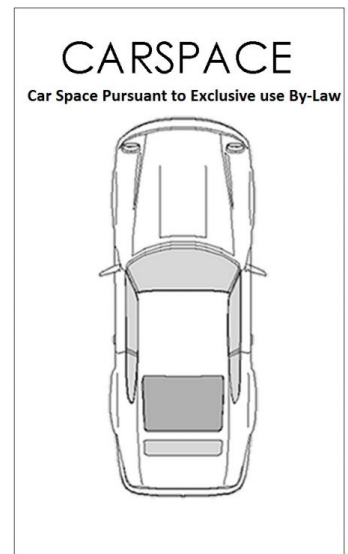
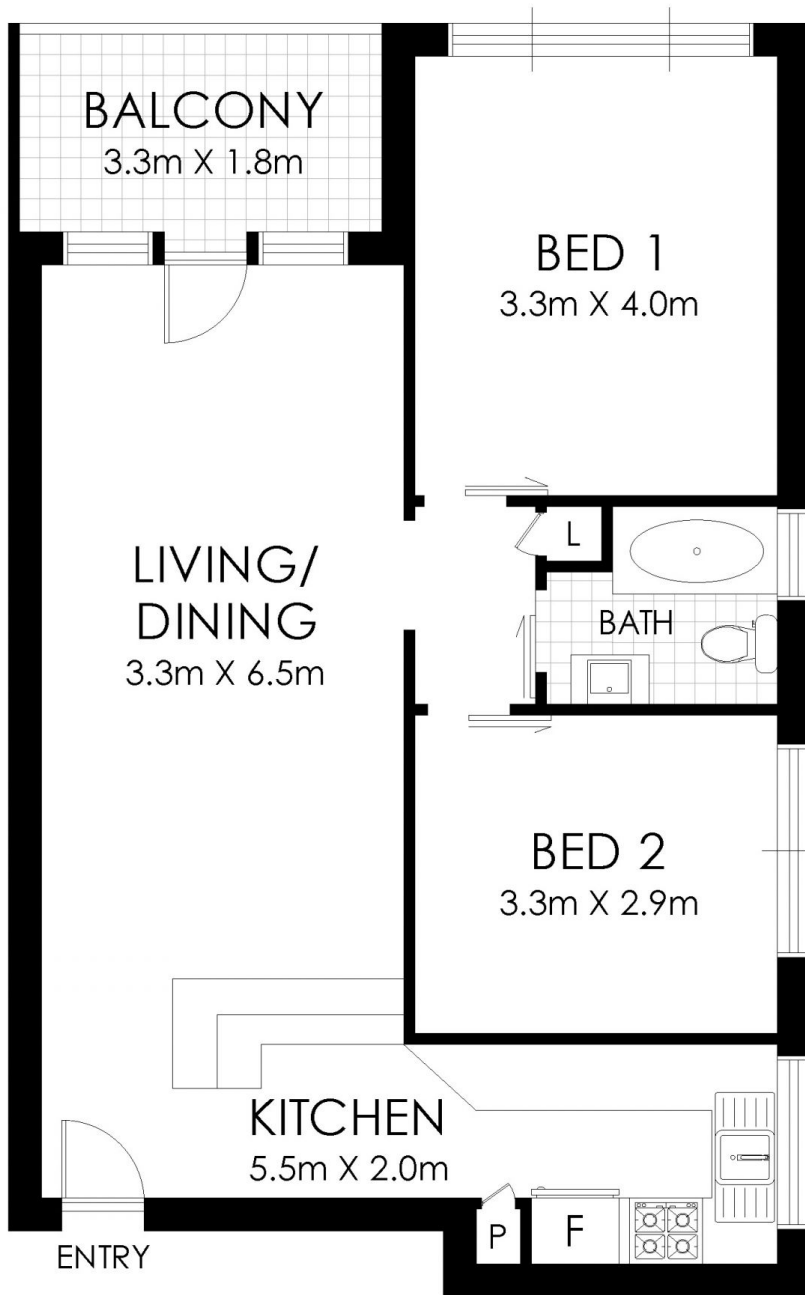


Nick Atanasovski
02 9599 9985



Brendan Weston
02 9599 9985

An ideal project could be undertaken here to add further improvements to your investment and see an increase in value.



FLOOR PLAN



2/52 Monomeeth Street, Bexley

WARNING: DISCLAIMER This information is not to be relied upon. It is strictly used for marketing and illustration purposes only. All measurements are approximate. Not to scale. No liability accepted. You must rely on your own inquiries and seek advice from your solicitor.